



Report of Test

LLIA000901-001B

Integrating Sphere Report

Catalog Number: AP50618/F11/D61/L411

Pendant mounted, formed steel canopy, aluminum and acrylic frame
with white "lumenate" diffuser, translucent white acrylic bottom enclosure.

One white LED module with clear patterned hemispherical lens below.

One ERP ESS030W-0620-42 LED driver



Performance Summary

Voltage	120.0 Vac
Current	0.2150 A
Power	25.26 W
Frequency	59.97 Hz
Power Factor	0.979
Current THD	12.4 %
Total Luminous Flux	1371.6 lm
Efficacy	54.3 lm/W
Chromaticity (x,y)	(0.4445, 0.4045)
(u',v')	(0.2552, 0.5227)
Duv	-0.0008
CCT	2881 K
CRI (Ra)	93
R9	68
TM-30: Rf	91
TM-30: Rg	101

Prepared For:

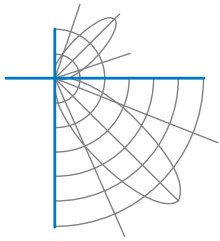
Lumetta, Inc

33 Minnesota Avenue

Warwick, RI 02888, USA

Test date: 12/01/2017

Report date: 12/13/2017



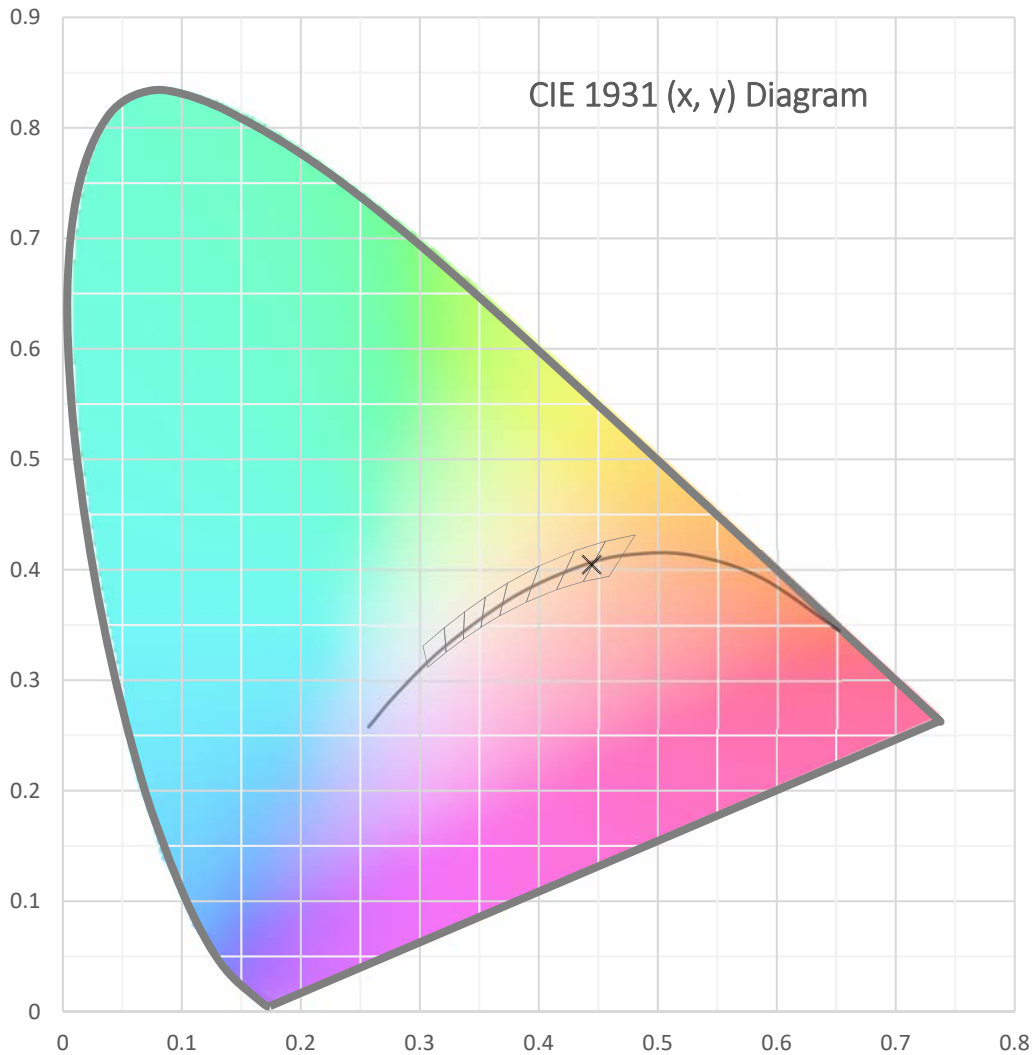
Test Report Number: LLIA000901-001B

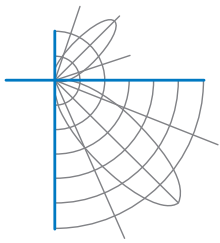
Catalog Number: AP50618/F11/D61/L411

Pendant mounted, formed steel canopy, aluminum and acrylic frame
with white "lumenate" diffuser, translucent white acrylic bottom enclosure.

One white LED module with clear patterned hemispherical lens below.

One ERP ESS030W-0620-42 LED driver





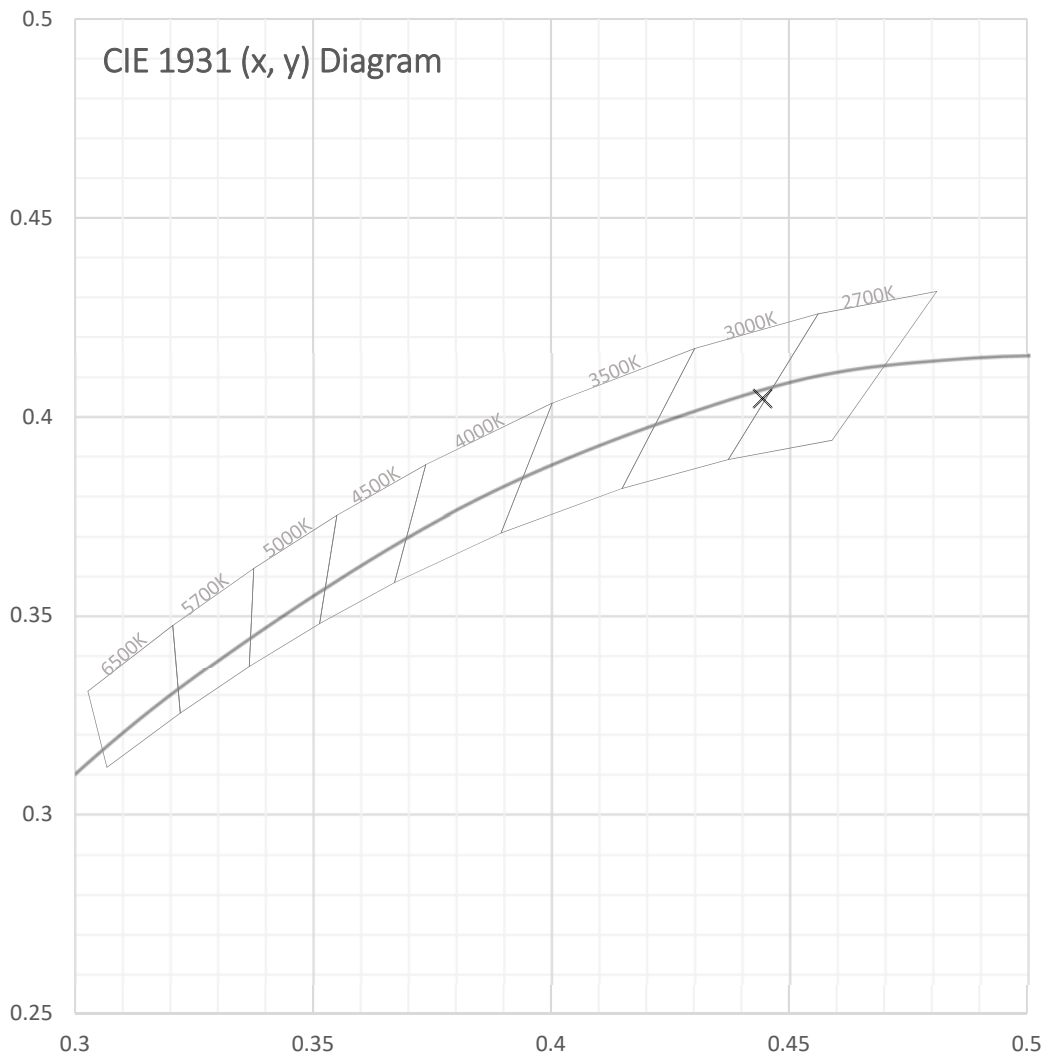
Test Report Number: LLIA000901-001B

Catalog Number: AP50618/F11/D61/L411

Pendant mounted, formed steel canopy, aluminum and acrylic frame
with white "lumenate" diffuser, translucent white acrylic bottom enclosure.

One white LED module with clear patterned hemispherical lens below.

One ERP ESS030W-0620-42 LED driver





Test Report Number: LLIA000901-001B

Catalog Number: AP50618/F11/D61/L411

Pendant mounted, formed steel canopy, aluminum and acrylic frame
with white "lumenate" diffuser, translucent white acrylic bottom enclosure.

One white LED module with clear patterned hemispherical lens below.

One ERP ESS030W-0620-42 LED driver

Spectral Data

Total Radiant Flux	5.057 W
Total Luminous Flux	1371.6 Lm
Chromaticity CIE 1931 (x, y)	(0.4445, 0.4045)
Chromaticity CIE 1976 (u', v')	(0.2552, 0.5227)
Correlated Color Temperature (CCT)	2881 K
Color Rendering Index (Ra)	93
R1	94
R2	95
R3	94
R4	93
R5	92
R6	93
R7	94
R8	87
R9	68
R10	86
R11	93
R12	81
R13	94
R14	96
TM-30: Rf	91
TM-30: Rg	101
Distance from Planckian Locus (Duv)	-0.0008
Scotopic/Photopic Ratio *	1.338

Electrical Data

Voltage	120.0 Vac
Current	0.2150 A
Power	25.26 W
Frequency	59.97 Hz
Power Factor	0.979
Current THD	12.4 %



Test Report Number: LLIA000901-001B

Catalog Number: AP50618/F11/D61/L411

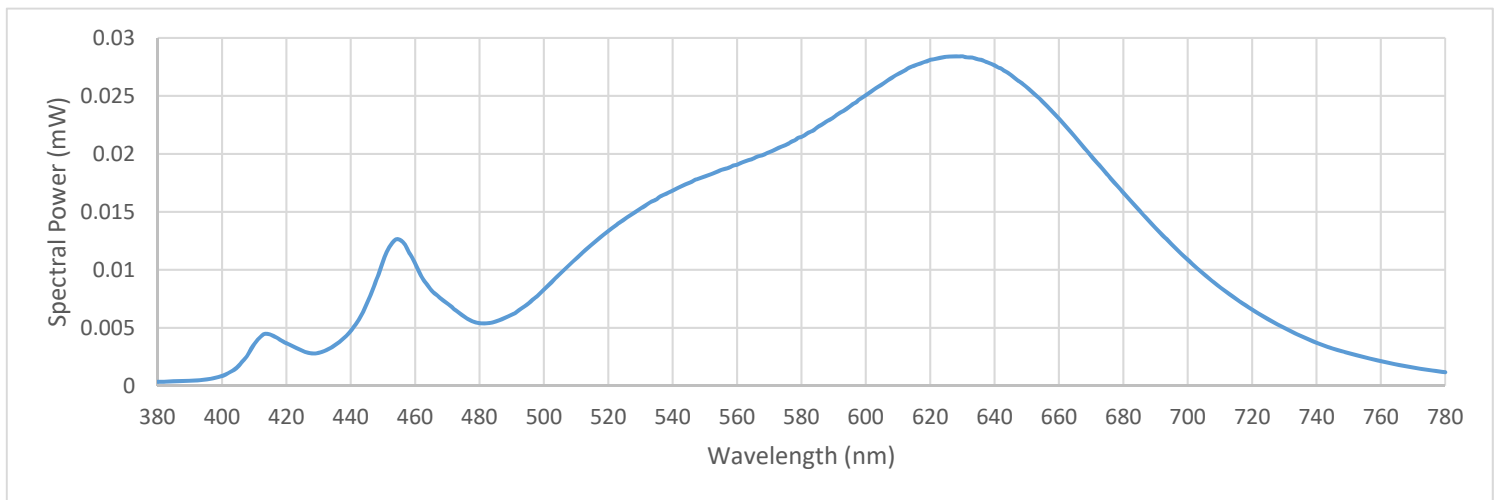
Pendant mounted, formed steel canopy, aluminum and acrylic frame
with white "lumenate" diffuser, translucent white acrylic bottom enclosure.

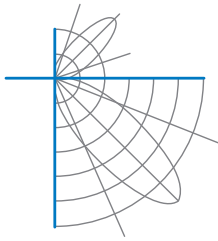
One white LED module with clear patterned hemispherical lens below.

One ERP ESS030W-0620-42 LED driver

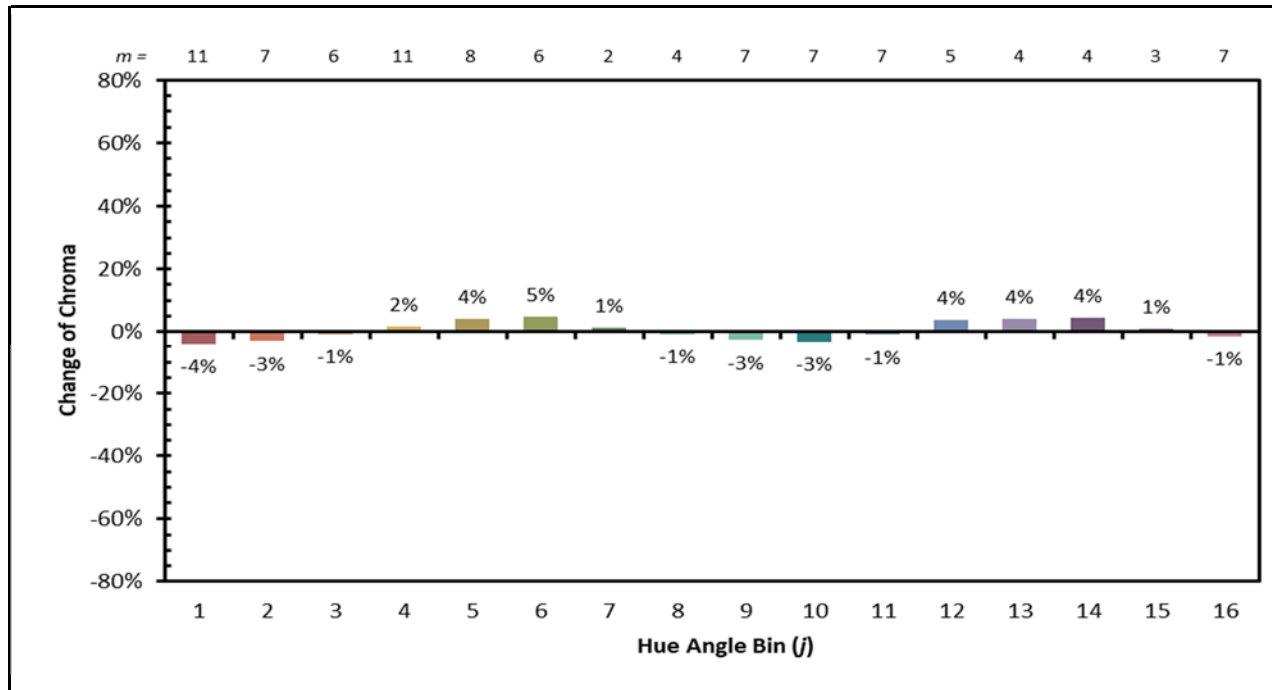
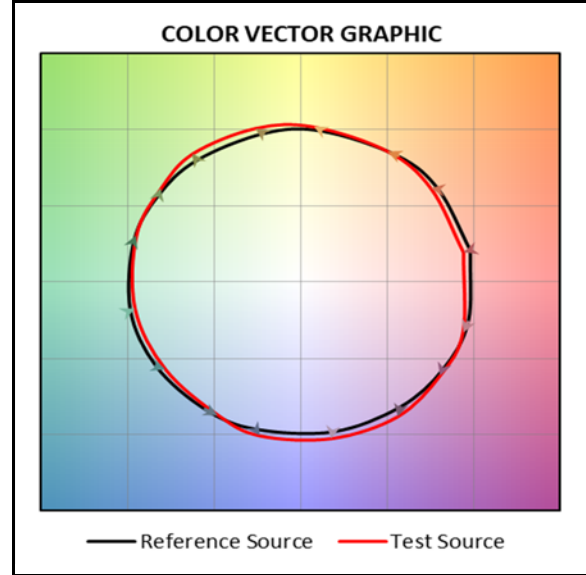
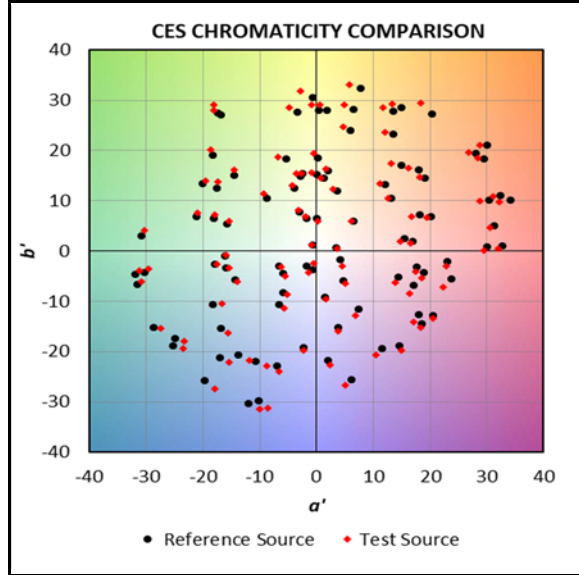
Summary Spectral Power Distribution (wavelength - nm, spectral power - mW)

380	0.000341	480	0.005401	580	0.021465	680	0.016638
385	0.000369	485	0.005541	585	0.022311	685	0.015135
390	0.000438	490	0.006133	590	0.023154	690	0.013616
395	0.000540	495	0.007057	595	0.024086	695	0.012185
400	0.000841	500	0.008301	600	0.025057	700	0.010889
405	0.001654	505	0.009656	605	0.025989	705	0.009629
410	0.003594	510	0.010961	610	0.026883	710	0.008489
415	0.004426	515	0.012209	615	0.027596	715	0.007508
420	0.003668	520	0.013359	620	0.028107	720	0.006573
425	0.003010	525	0.014350	625	0.028375	725	0.005730
430	0.002841	530	0.015294	630	0.028415	730	0.004996
435	0.003495	535	0.016084	635	0.028145	735	0.004310
440	0.004730	540	0.016831	640	0.027640	740	0.003707
445	0.007099	545	0.017474	645	0.026810	745	0.003210
450	0.010677	550	0.018046	650	0.025760	750	0.002824
455	0.012619	555	0.018606	655	0.024476	755	0.002449
460	0.010539	560	0.019061	660	0.023072	760	0.002121
465	0.008236	565	0.019588	665	0.021471	765	0.001830
470	0.007089	570	0.020143	670	0.019802	770	0.001573
475	0.005997	575	0.020754	675	0.018228	775	0.001357
						780	0.001167





IES TM-30 Details





Test Report Number: LLIA000901-001B

Catalog Number: AP50618/F11/D61/L411

Pendant mounted, formed steel canopy, aluminum and acrylic frame
with white "lumenate" diffuser, translucent white acrylic bottom enclosure.

One white LED module with clear patterned hemispherical lens below.

One ERP ESS030W-0620-42 LED driver

Test Equipment Configuration: LightLab International Allentown 2m Integrating Sphere
Measurements acquired using a Labsphere CDS 2600 spectroradiometer
Testing was performed using 4 π geometry

Test Temperature: 25.1 °C

Test Procedure: Tested in accordance with the applicable sections of:
LM-79-08, LM-78-07, LM-58-13, ANSI_ANSLG C78.377-2015,
ANSI C82-77-10:2014, TM-30-15

Significance: The laboratory has not participated in the selection of samples to be tested.
All testing is performed on the understanding that the significance of the report
is limited to the extent that the test sample is representative of production units.

Notes: The measurements and other derived quantities contained in this report
are based on the absolute data as measured.

Prorating the performance of the sample for the use of other component
combinations (such as lamp / LED / Ballast / driver), or for use in different
environmental conditions than that tested, may produce erroneous results.

This report is free of erasures and corrections

This report may contain data that are not covered by the NVLAP accreditation.
Quantities marked with * are not covered.