

Luminaire Property

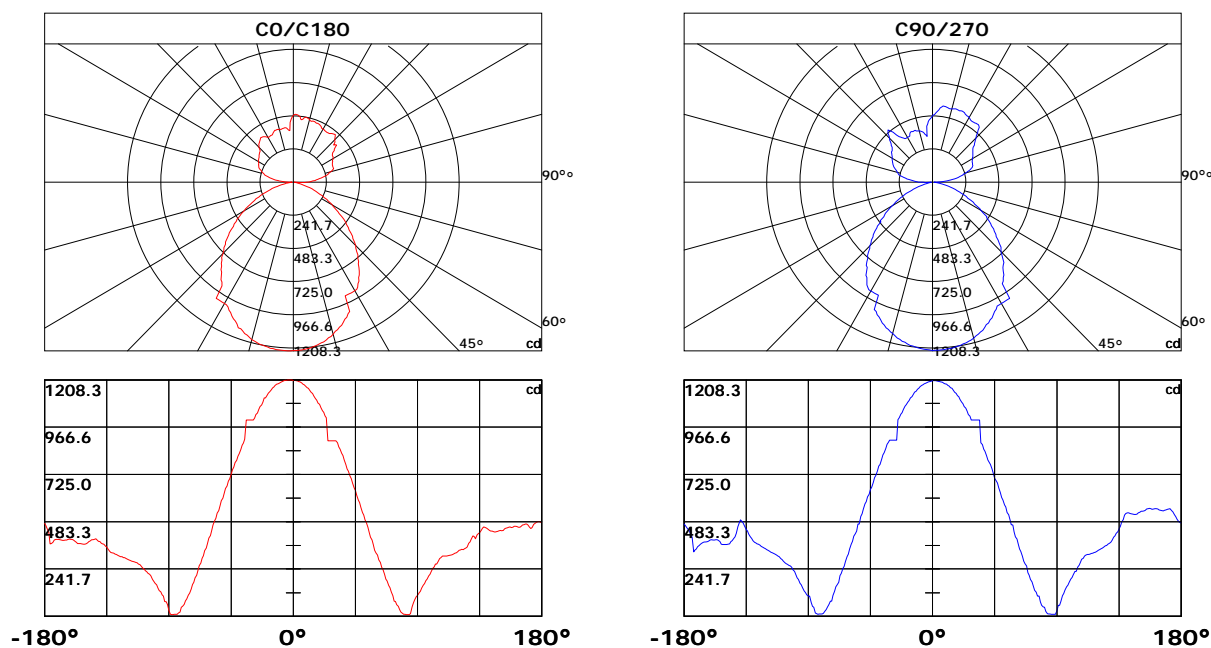
Luminaire Description: LL011280S-80W-D600
 Luminaire Category: LED MOON LIGHT
 Lamp Category:
 Lamp Description: Samsung 2835
 Number of Lamp: Direct and Indirect
 Lamp Lumens(lm): 7100.02
 Luminous Length(m): 0.6
 Luminous Width(m): 0.6
 Luminous Height(m): 0.095

Voltage: 120.8 V
 Current: 0.329 A
 Power: 80.99 W
 Power Factor: 0.977
 Test Lab:
 Photometric Type: Type C

Photometric Results

CIE Class: Direct
 Measurement Flux: 7100.02 lm
 Efficiency: 87.7 lm/W
 Central Intensity: 1205.18cd
 Max. Intensity: 1208.287cd
 Field Angle(10%Imax): 188.15, 184.72

Max.Intensity Angle: C:180.0 G:1.0
 Beam Angle(50%Imax): 224.35, 222.1
 Luminaire Efficacy Rating(LER) : 100.00%
 Upward Ratio: 40.87%
 Downward Ratio: 59.13%



Light intensity data Unit[cd]

C\G	G0.0	G1.0	G2.0	G3.0	G4.0	G5.0	G6.0	G7.0	G8.0	G9.0
C0.0	1205.2	1206.5	1204.4	1203.0	1199.8	1197.3	1193.1	1186.7	1183.9	1176.8
C45.0	1205.2	1201.9	1201.9	1199.8	1197.7	1196.6	1192.7	1188.1	1185.6	1180.0
C90.0	1205.2	1203.3	1203.3	1203.0	1200.9	1199.8	1197.3	1196.3	1192.4	1188.1
C135.0	1205.2	1205.8	1205.1	1204.0	1201.9	1200.5	1197.0	1193.1	1190.6	1184.9
C180.0	1205.2	1208.3	1208.3	1208.3	1207.6	1205.8	1205.8	1202.3	1200.5	1196.3
C225.0	1205.2	1202.6	1202.3	1200.5	1200.1	1197.3	1194.1	1189.5	1187.4	1184.2
C270.0	1205.2	1201.6	1199.4	1197.7	1194.5	1190.6	1188.1	1182.4	1179.3	1172.9
C315.0	1205.2	1205.5	1204.7	1201.9	1201.2	1198.4	1197.0	1192.7	1190.2	1184.9
C360.0	1205.2	1206.5	1204.4	1203.0	1199.8	1197.3	1193.1	1186.7	1183.9	1176.8
C\G	G10.0	G11.0	G12.0	G13.0	G14.0	G15.0	G16.0	G17.0	G18.0	G19.0
C0.0	1169.0	1164.7	1155.2	1144.2	1138.5	1125.4	1112.0	1104.9	1090.4	1083.0
C45.0	1176.4	1169.3	1161.2	1156.6	1146.3	1141.0	1123.0	1123.0	1110.2	1096.1
C90.0	1185.6	1179.3	1176.4	1169.0	1164.7	1155.5	1145.6	1139.6	1127.9	1121.9
C135.0	1178.5	1175.4	1167.6	1158.7	1154.1	1143.1	1131.5	1125.1	1111.6	1104.6
C180.0	1191.3	1188.5	1185.6	1179.3	1171.5	1166.5	1157.0	1146.7	1141.0	1129.0
C225.0	1184.2	1171.8	1163.7	1159.1	1149.9	1144.2	1132.9	1126.9	1113.4	1099.6
C270.0	1165.1	1160.5	1151.3	1146.0	1134.7	1122.6	1115.9	1102.8	1095.4	1081.2
C315.0	1177.8	1175.0	1165.8	1162.3	1152.4	1141.0	1135.4	1123.0	1116.6	1102.4
C360.0	1169.0	1164.7	1155.2	1144.2	1138.5	1125.4	1112.0	1104.9	1090.4	1083.0
C\G	G20.0	G21.0	G22.0	G23.0	G24.0	G25.0	G26.0	G27.0	G28.0	G29.0
C0.0	1067.4	1050.7	1042.6	1023.5	1014.6	897.8	897.8	897.8	897.8	897.8
C45.0	1087.9	1073.0	1064.9	1049.0	1032.3	1023.5	899.2	899.2	899.2	899.2
C90.0	1108.1	1094.3	1086.9	1071.6	1063.8	1048.3	1030.9	1022.1	1004.0	1004.0
C135.0	1090.4	1075.5	1058.2	1050.4	1042.2	1024.5	1015.7	997.3	889.3	889.3
C180.0	1115.9	1115.9	1094.6	1080.1	1072.3	1056.4	1039.1	1030.6	1013.2	1004.0
C225.0	1092.9	1078.0	1070.2	1054.3	1037.6	1029.5	1011.8	1003.0	1003.0	1003.0
C270.0	1073.4	1057.1	1040.5	1031.6	1014.6	1005.4	899.9	899.9	899.9	899.9
C315.0	1088.3	1080.5	1065.3	1049.0	1040.5	1023.5	1005.4	1005.4	1005.4	1005.4
C360.0	1067.4	1050.7	1042.6	1023.5	1014.6	897.8	897.8	897.8	897.8	897.8
C\G	G30.0	G31.0	G32.0	G33.0	G34.0	G35.0	G36.0	G37.0	G38.0	G39.0
C0.0	897.8	897.8	887.5	865.9	855.0	832.7	821.0	798.7	776.4	753.0
C45.0	899.2	899.2	899.2	899.2	878.0	856.7	846.1	823.5	801.5	775.3
C90.0	1004.0	1004.0	1004.0	1004.0	1004.0	886.5	876.2	854.3	843.3	820.6
C135.0	889.3	889.3	889.3	889.3	889.3	867.7	857.4	835.1	813.2	801.5
C180.0	1004.0	1004.0	1004.0	1004.0	1004.0	905.9	885.4	874.4	852.5	830.9
C225.0	1003.0	1003.0	1003.0	1003.0	885.4	863.1	853.6	830.2	807.9	796.6
C270.0	899.9	899.9	889.3	879.0	857.4	835.5	824.5	801.9	775.7	768.2
C315.0	1005.4	1005.4	1005.4	897.8	875.9	875.9	843.3	832.0	809.7	787.0
C360.0	897.8	897.8	887.5	865.9	855.0	832.7	821.0	798.7	776.4	753.0

Light intensity data Unit[cd]

C\G	G40.0	G41.0	G42.0	G43.0	G44.0	G45.0	G46.0	G47.0	G48.0	G49.0
C0.0	741.0	717.3	704.2	680.1	656.0	644.0	618.8	593.7	581.3	556.5
C45.0	766.5	754.8	731.8	708.4	698.1	673.0	660.6	636.5	612.1	599.7
C90.0	798.7	787.4	775.7	752.3	728.9	705.6	693.2	681.1	657.1	632.3
C135.0	775.3	755.1	743.5	720.4	696.7	685.0	660.6	636.2	624.1	599.4
C180.0	818.9	796.6	785.2	762.2	749.8	726.5	702.7	690.3	666.3	653.9
C225.0	773.9	750.5	739.2	727.2	703.8	679.7	667.3	643.3	630.5	606.1
C270.0	743.8	719.7	708.0	684.0	659.9	647.9	623.4	610.7	585.9	573.5
C315.0	775.7	753.0	741.0	718.0	693.9	682.2	658.1	645.7	621.0	608.6
C360.0	741.0	717.3	704.2	680.1	656.0	644.0	618.8	593.7	581.3	556.5
C\G	G50.0	G51.0	G52.0	G53.0	G54.0	G55.0	G56.0	G57.0	G58.0	G59.0
C0.0	531.0	518.3	493.2	480.4	454.9	429.4	403.9	390.8	365.0	338.0
C45.0	574.9	562.2	537.4	512.6	499.9	462.0	462.0	435.5	410.0	397.2
C90.0	607.2	594.8	570.0	557.6	531.0	519.0	493.9	468.0	466.6	431.6
C135.0	574.6	561.8	536.7	524.0	498.8	486.1	460.6	435.5	422.7	395.4
C180.0	629.1	604.0	590.9	564.3	539.5	526.8	501.3	488.6	465.9	438.6
C225.0	580.6	568.2	543.1	518.3	503.8	478.3	467.0	441.8	428.4	402.9
C270.0	548.4	523.2	510.5	472.3	472.3	434.7	422.4	409.6	383.4	368.9
C315.0	584.1	559.0	545.9	519.7	494.2	481.8	467.3	467.3	418.8	393.3
C360.0	531.0	518.3	493.2	480.4	454.9	429.4	403.9	390.8	365.0	338.0
C\G	G60.0	G61.0	G62.0	G63.0	G64.0	G65.0	G66.0	G67.0	G68.0	G69.0
C0.0	325.2	312.8	287.6	275.3	250.6	238.5	214.4	191.1	179.8	157.4
C45.0	372.1	359.0	334.1	309.0	296.7	260.3	248.3	236.5	213.2	190.4
C90.0	406.4	393.7	368.2	343.3	330.7	306.0	281.4	269.3	257.4	222.1
C135.0	382.7	356.9	331.5	318.8	293.8	281.4	257.0	233.1	221.4	198.3
C180.0	412.8	399.7	373.5	348.1	335.1	309.7	296.8	271.6	259.1	234.3
C225.0	376.7	363.6	338.2	312.8	300.1	275.3	250.5	238.5	214.5	202.5
C270.0	343.4	318.3	305.4	280.5	255.9	243.7	219.5	207.8	173.1	161.8
C315.0	367.1	354.7	329.3	304.2	291.6	267.2	255.0	242.8	207.7	196.1
C360.0	325.2	312.8	287.6	275.3	250.6	238.5	214.4	191.1	179.8	157.4
C\G	G70.0	G71.0	G72.0	G73.0	G74.0	G75.0	G76.0	G77.0	G78.0	G79.0
C0.0	146.6	125.1	104.9	77.4	76.2	58.8	50.7	35.1	21.3	15.4
C45.0	179.2	157.3	136.1	125.7	105.0	77.5	74.1	56.2	47.7	32.0
C90.0	210.6	188.1	175.9	154.3	132.9	122.7	102.6	102.6	74.1	56.1
C135.0	186.9	164.6	143.4	132.5	111.6	76.8	76.8	62.2	46.3	37.6
C180.0	209.9	196.6	173.9	162.4	140.0	118.5	108.0	88.3	78.8	60.4
C225.0	179.2	156.8	135.1	124.4	102.0	102.0	72.3	53.8	47.3	29.5
C270.0	150.4	128.5	107.3	76.8	76.8	58.3	48.6	34.0	26.9	15.3
C315.0	173.5	162.6	139.6	118.7	108.3	87.8	78.0	59.8	51.1	46.8
C360.0	146.6	125.1	104.9	77.4	76.2	58.8	50.7	35.1	21.3	15.4

Light intensity data Unit[cd]

C\G	G80.0	G81.0	G82.0	G83.0	G84.0	G85.0	G86.0	G87.0	G88.0	G89.0
C0.0	9.9	9.3	9.1	8.7	8.7	12.8	47.9	67.0	83.8	100.3
C45.0	25.3	13.9	10.9	10.5	10.0	9.8	9.5	15.9	46.7	59.3
C90.0	47.7	46.6	25.4	14.5	12.6	11.8	11.1	10.8	10.5	10.9
C135.0	23.8	13.7	12.7	11.9	11.5	11.0	10.5	12.5	47.9	51.4
C180.0	51.8	46.7	22.1	16.2	11.1	10.2	9.8	9.0	8.3	11.1
C225.0	22.6	16.5	10.0	9.3	8.8	8.7	8.4	9.0	20.6	41.1
C270.0	12.2	11.8	11.3	11.1	13.6	16.1	47.2	51.4	71.1	104.2
C315.0	21.2	15.4	10.5	10.1	9.5	10.8	12.1	15.1	42.9	56.6
C360.0	9.9	9.3	9.1	8.7	8.7	12.8	47.9	67.0	83.8	100.3
C\G	G90.0	G91.0	G92.0	G93.0	G94.0	G95.0	G96.0	G97.0	G98.0	G99.0
C0.0	106.7	120.7	128.1	143.7	159.4	167.1	181.9	190.4	205.7	214.5
C45.0	83.3	106.8	114.1	130.3	147.7	164.1	172.4	189.3	197.8	214.8
C90.0	29.2	56.4	56.4	76.2	105.1	115.6	134.4	151.3	159.5	174.8
C135.0	100.2	106.5	115.3	131.9	139.6	163.5	171.0	179.5	197.8	215.4
C180.0	30.8	60.2	73.6	76.6	104.5	110.2	124.0	131.8	145.4	161.3
C225.0	57.2	68.4	70.7	77.5	87.5	87.5	100.9	106.8	109.0	114.1
C270.0	104.2	109.8	121.6	130.3	145.7	160.8	169.8	187.8	196.2	213.1
C315.0	77.2	117.6	121.0	135.7	151.2	159.5	173.4	181.1	195.8	211.1
C360.0	106.7	120.7	128.1	143.7	159.4	167.1	181.9	190.4	205.7	214.5
C\G	G100.0	G101.0	G102.0	G103.0	G104.0	G105.0	G106.0	G107.0	G108.0	G109.0
C0.0	230.0	245.1	252.8	267.6	267.1	281.1	295.3	300.3	308.6	308.2
C45.0	231.4	239.6	255.8	271.3	266.6	241.2	222.0	210.6	203.2	201.7
C90.0	190.5	198.2	213.6	229.4	229.4	253.1	260.9	276.0	290.7	296.5
C135.0	223.9	232.3	260.5	260.5	266.8	253.2	234.9	227.7	213.1	209.9
C180.0	168.6	179.4	187.8	206.9	215.6	219.7	228.3	233.2	242.8	247.1
C225.0	119.4	122.3	126.1	124.5	117.8	116.8	116.7	115.1	109.9	108.3
C270.0	229.2	237.3	251.4	256.9	260.4	264.9	268.8	273.4	281.5	290.4
C315.0	221.9	241.7	260.3	268.7	276.3	277.2	257.0	246.3	226.6	215.4
C360.0	230.0	245.1	252.8	267.6	267.1	281.1	295.3	300.3	308.6	308.2
C\G	G110.0	G111.0	G112.0	G113.0	G114.0	G115.0	G116.0	G117.0	G118.0	G119.0
C0.0	308.3	308.1	309.7	310.8	311.8	315.2	318.2	322.3	324.1	329.0
C45.0	202.5	204.3	205.7	208.1	211.1	235.7	271.6	294.1	328.9	343.1
C90.0	307.6	311.9	316.4	316.5	317.9	320.6	322.1	325.7	327.8	332.1
C135.0	210.4	212.0	214.5	216.3	220.0	228.3	235.1	253.2	265.1	283.9
C180.0	255.6	263.6	267.4	273.3	275.6	278.2	281.0	282.2	285.3	288.9
C225.0	108.2	109.8	109.8	111.7	111.7	113.9	114.7	123.3	136.7	147.0
C270.0	295.1	304.0	307.0	312.2	317.9	320.1	324.8	327.2	332.4	337.4
C315.0	213.1	214.3	214.7	216.2	217.7	221.3	224.9	227.6	237.3	258.5
C360.0	308.3	308.1	309.7	310.8	311.8	315.2	318.2	322.3	324.1	329.0

Light intensity data Unit[cd]

C\G	G120.0	G121.0	G122.0	G123.0	G124.0	G125.0	G126.0	G127.0	G128.0	G129.0
C0.0	336.4	339.5	342.3	341.0	344.9	348.1	354.4	374.2	380.6	395.1
C45.0	362.9	370.3	383.8	395.8	401.5	412.4	417.4	427.7	437.9	442.9
C90.0	337.1	340.1	346.2	349.0	354.4	359.7	362.5	367.8	374.2	377.4
C135.0	295.4	300.0	308.4	312.3	319.5	327.1	330.8	337.6	341.0	348.1
C180.0	291.0	294.9	298.9	300.8	303.6	305.2	307.1	311.1	315.5	317.8
C225.0	158.6	186.4	212.9	234.4	243.5	257.8	266.0	280.1	290.3	295.8
C270.0	340.0	345.3	348.2	354.4	357.9	363.9	368.9	370.7	375.3	378.5
C315.0	272.1	290.0	302.7	308.5	321.3	332.2	337.2	345.6	351.8	355.1
C360.0	336.4	339.5	342.3	341.0	344.9	348.1	354.4	374.2	380.6	395.1
C\G	G130.0	G131.0	G132.0	G133.0	G134.0	G135.0	G136.0	G137.0	G138.0	G139.0
C0.0	411.4	407.5	396.5	416.3	422.0	427.0	437.9	450.7	456.3	453.2
C45.0	453.2	463.8	468.4	478.3	487.1	491.7	500.6	507.7	511.6	519.0
C90.0	387.7	404.7	410.3	424.1	431.9	446.8	460.9	482.2	494.9	517.6
C135.0	351.8	359.0	365.7	368.5	374.2	377.4	383.1	387.7	393.0	398.3
C180.0	322.1	323.8	325.8	332.3	343.9	354.4	359.3	368.2	370.3	374.2
C225.0	305.3	314.4	318.8	326.9	333.9	337.7	343.5	350.6	354.0	355.4
C270.0	385.5	397.9	405.7	419.9	434.7	442.9	459.2	474.0	483.6	493.5
C315.0	361.8	367.8	370.3	375.3	377.4	382.0	384.5	390.1	392.6	398.3
C360.0	411.4	407.5	396.5	416.3	422.0	427.0	437.9	450.7	456.3	453.2
C\G	G140.0	G141.0	G142.0	G143.0	G144.0	G145.0	G146.0	G147.0	G148.0	G149.0
C0.0	450.7	445.7	439.0	435.8	434.7	432.6	431.2	431.9	434.4	437.6
C45.0	525.4	528.9	536.3	539.5	545.6	545.6	549.4	556.2	559.0	561.1
C90.0	525.0	527.9	528.2	526.1	524.0	522.5	521.5	521.1	522.9	528.9
C135.0	401.1	404.3	410.3	415.6	418.1	423.1	420.9	418.1	414.6	415.6
C180.0	380.9	383.8	390.1	396.2	393.3	391.9	391.2	385.2	381.6	375.6
C225.0	354.4	356.5	365.0	365.0	381.6	386.2	395.8	398.3	399.7	408.9
C270.0	476.5	457.8	424.5	405.4	398.3	386.6	380.9	371.0	367.8	367.1
C315.0	403.2	405.7	410.7	412.8	415.6	414.9	416.0	412.4	410.3	407.8
C360.0	450.7	445.7	439.0	435.8	434.7	432.6	431.2	431.9	434.4	437.6
C\G	G150.0	G151.0	G152.0	G153.0	G154.0	G155.0	G156.0	G157.0	G158.0	G159.0
C0.0	438.3	436.9	437.9	446.8	450.7	452.1	456.0	456.3	453.9	454.6
C45.0	562.5	572.1	577.8	579.5	582.4	582.4	583.4	586.6	590.2	590.5
C90.0	531.7	536.7	537.1	538.5	542.0	548.7	550.2	551.2	549.4	546.6
C135.0	417.0	418.8	417.7	418.8	421.6	426.2	426.6	426.2	422.0	419.5
C180.0	370.0	367.8	367.8	371.0	371.4	371.4	371.7	377.7	383.8	389.4
C225.0	413.9	419.9	439.3	447.1	464.1	472.6	492.8	511.2	524.0	539.9
C270.0	367.5	367.1	366.4	368.9	381.3	388.7	391.6	391.9	389.4	389.1
C315.0	407.8	408.9	411.7	411.7	410.3	411.0	414.9	414.6	413.5	408.5
C360.0	438.3	436.9	437.9	446.8	450.7	452.1	456.0	456.3	453.9	454.6

Light intensity data Unit[cd]

C\G	G160.0	G161.0	G162.0	G163.0	G164.0	G165.0	G166.0	G167.0	G168.0	G169.0
C0.0	460.2	459.9	458.5	454.6	455.3	460.6	465.9	468.7	471.9	472.6
C45.0	590.2	589.1	589.1	588.7	588.0	588.7	589.5	590.5	591.2	590.2
C90.0	548.0	549.8	549.8	547.7	543.8	541.7	539.9	538.1	542.0	544.1
C135.0	418.8	418.5	418.1	416.3	414.9	412.4	409.3	407.5	402.5	399.0
C180.0	392.6	392.3	393.7	393.3	390.1	390.1	388.7	388.0	390.1	391.9
C225.0	548.7	561.1	565.4	567.5	571.0	571.8	571.8	571.0	568.9	567.5
C270.0	391.2	390.8	385.2	382.3	380.2	379.5	377.7	372.8	368.9	362.2
C315.0	406.4	405.0	405.0	405.0	400.0	399.3	397.6	396.9	395.1	384.8
C360.0	460.2	459.9	458.5	454.6	455.3	460.6	465.9	468.7	471.9	472.6
C\G	G170.0	G171.0	G172.0	G173.0	G174.0	G175.0	G176.0	G177.0	G178.0	G179.0
C0.0	466.3	454.9	449.3	453.5	470.1	474.4	480.1	482.9	484.0	482.2
C45.0	585.9	578.1	573.5	589.1	645.7	685.4	689.3	679.0	672.3	662.4
C90.0	547.0	548.4	549.4	540.6	534.6	519.0	509.4	496.0	483.6	480.4
C135.0	390.8	380.2	373.1	360.4	406.8	427.7	442.9	447.5	444.7	439.7
C180.0	392.6	393.0	393.0	389.4	378.1	372.1	369.2	428.7	447.5	464.1
C225.0	562.5	557.9	555.1	543.8	543.8	554.0	663.8	685.4	678.3	667.3
C270.0	354.7	343.7	339.3	329.0	403.2	417.7	434.7	445.0	453.9	464.1
C315.0	382.3	373.1	368.2	359.3	344.6	374.9	439.0	453.2	445.7	437.2
C360.0	466.3	454.9	449.3	453.5	470.1	474.4	480.1	482.9	484.0	482.2
C\G	G180.0									
C0.0	477.9									
C45.0	664.2									
C90.0	476.9									
C135.0	436.2									
C180.0	474.7									
C225.0	666.3									
C270.0	471.9									
C315.0	436.9									
C360.0	477.9									

Zonal Luminous Flux Data

Gamma [°]	I _{mean} [cd]	Zonal Flux [lm]	Sum Flux [lm]	Zonal Flux [%]	Sum Flux [%]
0.0	1205.18	0.00	0.00	0.00	0.00
0.0-1.0	1204.44	1.15	1.15	0.02	0.02
1.0-2.0	1203.69	3.46	4.61	0.07	0.10
2.0-3.0	1202.27	5.75	10.36	0.12	0.22
3.0-4.0	1200.45	8.04	18.41	0.17	0.39
4.0-5.0	1198.29	10.32	28.73	0.22	0.61
5.0-6.0	1195.63	12.58	41.31	0.27	0.87
6.0-7.0	1191.38	14.82	56.12	0.31	1.19
7.0-8.0	1188.73	17.03	73.16	0.36	1.55
8.0-9.0	1183.51	19.23	92.38	0.41	1.95
9.0-10.0	1178.51	21.38	113.76	0.45	2.40
10.0-11.0	1173.06	23.50	137.25	0.50	2.90
11.0-12.0	1165.85	25.57	162.82	0.54	3.44
12.0-13.0	1159.39	27.59	190.42	0.58	4.02
13.0-14.0	1151.51	29.58	220.00	0.62	4.65
14.0-15.0	1142.44	31.49	251.49	0.67	5.31
15.0-16.0	1131.64	33.32	284.81	0.70	6.02
16.0-17.0	1123.99	35.13	319.94	0.74	6.76
17.0-18.0	1113.32	36.89	356.82	0.78	7.54
18.0-19.0	1102.21	38.55	395.37	0.81	8.35
19.0-20.0	1090.53	40.13	435.50	0.85	9.20
20.0-21.0	1078.14	41.64	477.15	0.88	10.08
21.0-22.0	1065.39	43.08	520.22	0.91	10.99
22.0-23.0	1051.19	44.41	564.63	0.94	11.93
23.0-24.0	1039.77	45.72	610.35	0.97	12.89
24.0-25.0	1013.62	46.69	657.04	0.99	13.88
25.0-26.0	974.98	46.94	703.98	0.99	14.87
26.0-27.0	969.41	47.57	751.55	1.00	15.88
27.0-28.0	951.49	48.63	800.18	1.03	16.90
28.0-29.0	950.34	49.76	849.94	1.05	17.96
29.0-30.0	950.34	51.32	901.26	1.08	19.04
30.0-31.0	950.34	52.89	954.15	1.12	20.16
31.0-32.0	947.72	54.38	1008.53	1.15	21.31
32.0-33.0	930.29	55.33	1063.86	1.17	22.47
33.0-34.0	906.13	55.58	1119.43	1.17	23.65
34.0-35.0	865.50	55.02	1174.45	1.16	24.81
35.0-36.0	850.94	54.65	1229.10	1.15	25.97
36.0-37.0	831.25	54.86	1283.97	1.16	27.12
37.0-38.0	810.01	54.78	1338.75	1.16	28.28
38.0-39.0	791.64	54.67	1393.42	1.15	29.44
39.0-40.0	774.21	54.61	1448.03	1.15	30.59

Zonal Luminous Flux Data

Gamma [°]	I _{mean} [cd]	Zonal Flux [lm]	Sum Flux [lm]	Zonal Flux [%]	Sum Flux [%]
40.0-41.0	754.29	54.43	1502.46	1.15	31.74
41.0-42.0	741.06	54.33	1556.79	1.15	32.89
42.0-43.0	719.07	54.09	1610.88	1.14	34.03
43.0-44.0	698.40	53.50	1664.37	1.13	35.16
44.0-45.0	680.48	52.99	1717.37	1.12	36.28
45.0-46.0	660.61	52.45	1769.81	1.11	37.39
46.0-47.0	642.20	51.82	1821.63	1.09	38.48
47.0-48.0	622.29	51.12	1872.75	1.08	39.56
48.0-49.0	603.75	50.35	1923.10	1.06	40.63
49.0-50.0	578.74	49.30	1972.40	1.04	41.67
50.0-51.0	561.44	48.24	2020.64	1.02	42.69
51.0-52.0	540.95	47.30	2067.94	1.00	43.69
52.0-53.0	518.65	46.09	2114.03	0.97	44.66
53.0-54.0	499.31	44.87	2158.90	0.95	45.61
54.0-55.0	477.27	43.59	2202.49	0.92	46.53
55.0-56.0	459.79	42.34	2244.84	0.89	47.42
56.0-57.0	442.13	41.24	2286.07	0.87	48.29
57.0-58.0	420.09	39.87	2325.95	0.84	49.14
58.0-59.0	395.74	38.14	2364.09	0.81	49.94
59.0-60.0	373.30	36.33	2400.42	0.77	50.71
60.0-61.0	357.33	34.87	2435.29	0.74	51.45
61.0-62.0	333.48	33.29	2468.57	0.70	52.15
62.0-63.0	311.51	31.37	2499.94	0.66	52.81
63.0-64.0	294.31	29.73	2529.67	0.63	53.44
64.0-65.0	272.76	28.06	2557.74	0.59	54.03
65.0-66.0	252.88	26.23	2583.96	0.55	54.59
66.0-67.0	236.34	24.60	2608.56	0.52	55.11
67.0-68.0	215.76	22.90	2631.46	0.48	55.59
68.0-69.0	195.36	20.97	2652.44	0.44	56.03
69.0-70.0	179.53	19.25	2671.69	0.41	56.44
70.0-71.0	159.96	17.55	2689.24	0.37	56.81
71.0-72.0	139.50	15.57	2704.81	0.33	57.14
72.0-73.0	121.51	13.65	2718.46	0.29	57.43
73.0-74.0	106.59	11.99	2730.45	0.25	57.68
74.0-75.0	87.79	10.27	2740.72	0.22	57.90
75.0-76.0	76.39	8.72	2749.43	0.18	58.08
76.0-77.0	61.49	7.35	2756.78	0.16	58.24
77.0-78.0	49.19	5.92	2762.71	0.13	58.36
78.0-79.0	36.63	4.61	2767.32	0.10	58.46
79.0-80.0	26.83	3.42	2770.74	0.07	58.53
80.0-81.0	21.75	2.63	2773.37	0.06	58.59

Zonal Luminous Flux Data

Gamma [°]	I _{mean} [cd]	Zonal Flux [lm]	Sum Flux [lm]	Zonal Flux [%]	Sum Flux [%]
81.0-82.0	14.00	1.94	2775.31	0.04	58.63
82.0-83.0	11.55	1.39	2776.70	0.03	58.66
83.0-84.0	10.73	1.21	2777.91	0.03	58.68
84.0-85.0	11.40	1.21	2779.12	0.03	58.71
85.0-86.0	19.54	1.69	2780.81	0.04	58.75
86.0-87.0	23.83	2.37	2783.18	0.05	58.80
87.0-88.0	41.48	3.58	2786.76	0.08	58.87
88.0-89.0	54.36	5.25	2792.01	0.11	58.98
89.0-90.0	73.59	7.02	2799.03	0.15	59.13
90.0-91.0	93.31	9.15	2808.18	0.19	59.32
91.0-92.0	100.10	10.60	2818.78	0.22	59.55
92.0-93.0	112.77	11.66	2830.44	0.25	59.79
93.0-94.0	130.09	13.29	2843.73	0.28	60.08
94.0-95.0	141.03	14.82	2858.55	0.31	60.39
95.0-96.0	153.47	16.07	2874.62	0.34	60.73
96.0-97.0	164.75	17.34	2891.96	0.37	61.09
97.0-98.0	175.91	18.52	2910.48	0.39	61.49
98.0-99.0	189.89	19.84	2930.31	0.42	61.90
99.0-100.0	201.85	21.18	2951.50	0.45	62.35
100.0-101.0	211.99	22.31	2973.81	0.47	62.82
101.0-102.0	226.05	23.54	2997.35	0.50	63.32
102.0-103.0	235.72	24.72	3022.06	0.52	63.84
103.0-104.0	237.48	25.23	3047.29	0.53	64.38
104.0-105.0	238.40	25.26	3072.56	0.53	64.91
105.0-106.0	235.47	25.04	3097.59	0.53	65.44
106.0-107.0	235.32	24.75	3122.34	0.52	65.96
107.0-108.0	234.56	24.57	3146.91	0.52	66.48
108.0-109.0	234.69	24.40	3171.31	0.52	67.00
109.0-110.0	237.61	24.41	3195.72	0.52	67.51
110.0-111.0	240.99	24.58	3220.31	0.52	68.03
111.0-112.0	243.14	24.70	3245.00	0.52	68.55
112.0-113.0	245.64	24.76	3269.76	0.52	69.08
113.0-114.0	247.97	24.82	3294.58	0.52	69.60
114.0-115.0	254.16	25.05	3319.64	0.53	70.13
115.0-116.0	261.55	25.52	3345.16	0.54	70.67
116.0-117.0	269.43	26.06	3371.21	0.55	71.22
117.0-118.0	279.68	26.71	3397.92	0.56	71.78
118.0-119.0	289.98	27.45	3425.37	0.58	72.36
119.0-120.0	299.19	28.12	3453.49	0.59	72.96
120.0-121.0	308.32	28.70	3482.19	0.61	73.56
121.0-122.0	317.91	29.28	3511.46	0.62	74.18

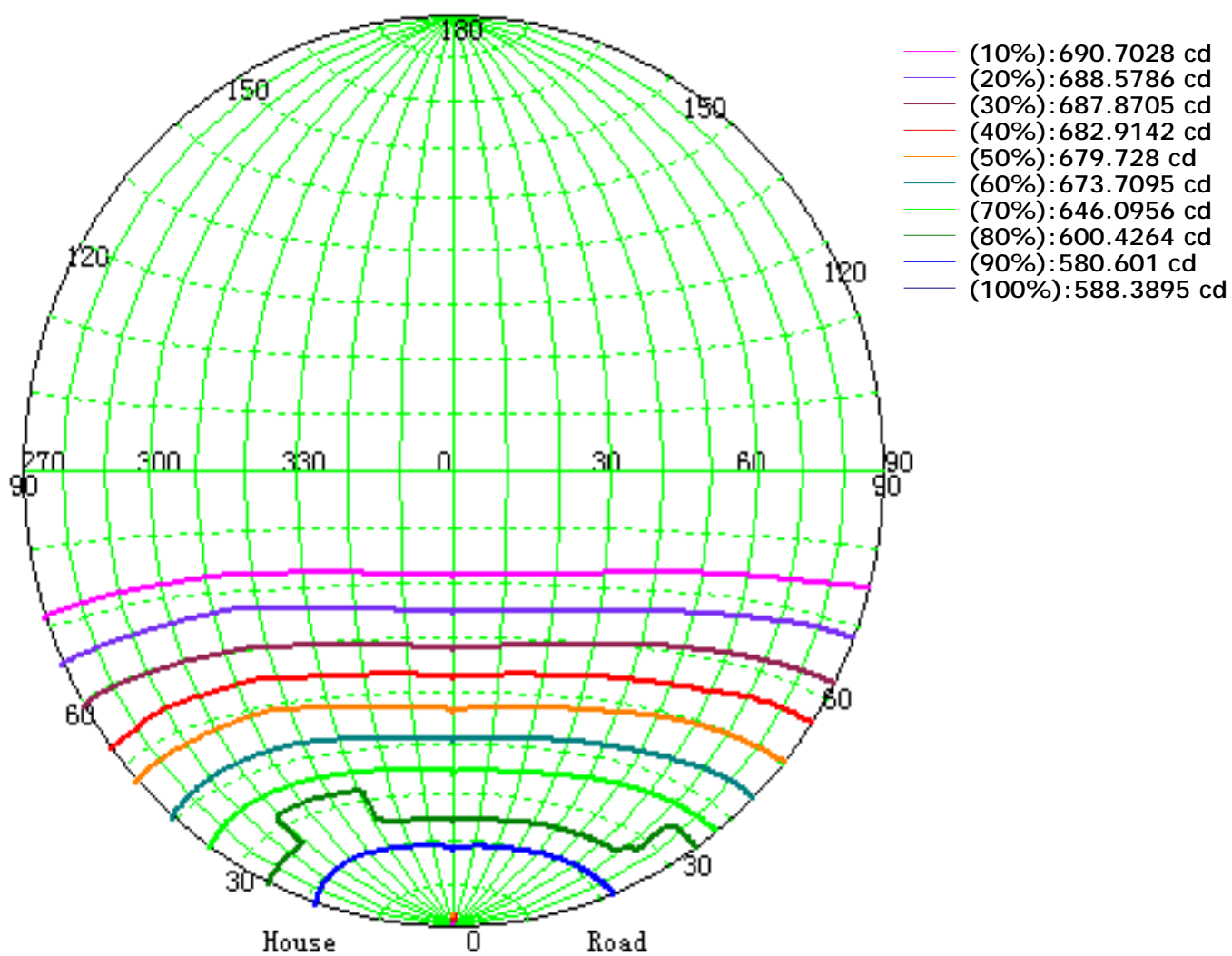
Zonal Luminous Flux Data

Gamma [°]	I _{mean} [cd]	Zonal Flux [lm]	Sum Flux [lm]	Zonal Flux [%]	Sum Flux [%]
122.0-123.0	324.51	29.71	3541.17	0.63	74.81
123.0-124.0	330.81	29.96	3571.14	0.63	75.44
124.0-125.0	338.31	30.24	3601.37	0.64	76.08
125.0-126.0	343.03	30.41	3631.79	0.64	76.72
126.0-127.0	351.85	30.63	3662.41	0.65	77.37
127.0-128.0	358.32	30.89	3693.31	0.65	78.02
128.0-129.0	363.81	30.99	3724.29	0.65	78.68
129.0-130.0	372.34	31.15	3755.44	0.66	79.34
130.0-131.0	379.86	31.36	3786.80	0.66	80.00
131.0-132.0	382.69	31.31	3818.11	0.66	80.66
132.0-133.0	392.70	31.35	3849.46	0.66	81.32
133.0-134.0	400.65	31.55	3881.01	0.67	81.99
134.0-135.0	407.48	31.60	3912.62	0.67	82.66
135.0-136.0	416.13	31.65	3944.27	0.67	83.32
136.0-137.0	426.39	31.80	3976.07	0.67	84.00
137.0-138.0	432.04	31.80	4007.87	0.67	84.67
138.0-139.0	438.68	31.63	4039.50	0.67	85.34
139.0-140.0	439.65	31.28	4070.78	0.66	86.00
140.0-141.0	438.81	30.64	4101.42	0.65	86.64
141.0-142.0	438.02	29.93	4131.35	0.63	87.28
142.0-143.0	437.04	29.21	4160.55	0.62	87.89
143.0-144.0	438.90	28.57	4189.12	0.60	88.50
144.0-145.0	437.93	27.92	4217.04	0.59	89.09
145.0-146.0	438.37	27.21	4244.26	0.57	89.66
146.0-147.0	436.78	26.48	4270.74	0.56	90.22
147.0-148.0	436.29	25.72	4296.46	0.54	90.76
148.0-149.0	437.84	25.04	4321.50	0.53	91.29
149.0-150.0	438.59	24.39	4345.89	0.52	91.81
150.0-151.0	441.03	23.75	4369.64	0.50	92.31
151.0-152.0	444.48	23.17	4392.81	0.49	92.80
152.0-153.0	447.80	22.59	4415.40	0.48	93.28
153.0-154.0	452.98	22.04	4437.44	0.47	93.74
154.0-155.0	456.65	21.47	4458.91	0.45	94.20
155.0-156.0	460.90	20.86	4479.77	0.44	94.64
156.0-157.0	464.48	20.23	4500.01	0.43	95.06
157.0-158.0	465.76	19.52	4519.52	0.41	95.48
158.0-159.0	467.27	18.75	4538.27	0.40	95.87
159.0-160.0	469.53	17.99	4556.26	0.38	96.25
160.0-161.0	470.81	17.21	4573.47	0.36	96.62
161.0-162.0	470.59	16.38	4589.85	0.35	96.96
162.0-163.0	469.44	15.50	4605.35	0.33	97.29

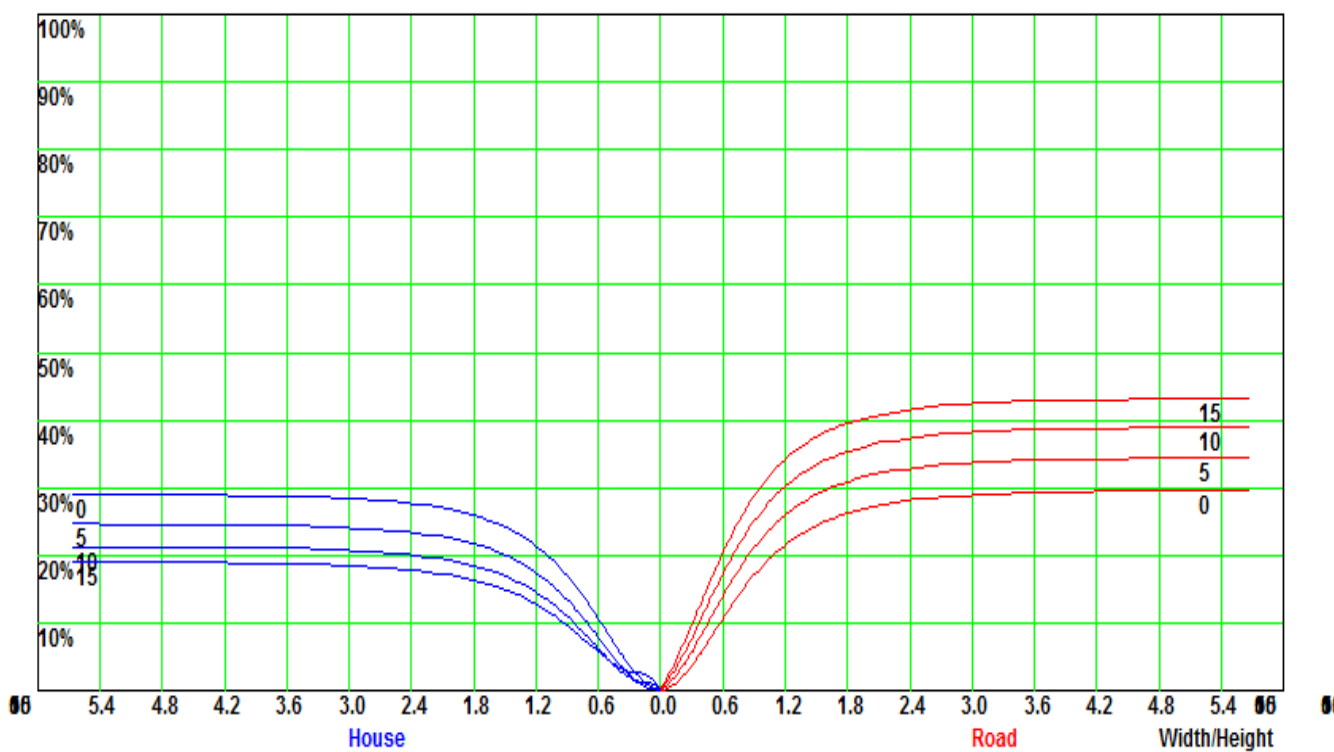
Zonal Luminous Flux Data

Gamma [°]	I _{mean} [cd]	Zonal Flux [lm]	Sum Flux [lm]	Zonal Flux [%]	Sum Flux [%]
163.0-164.0	467.93	14.60	4619.95	0.31	97.60
164.0-165.0	468.02	13.71	4633.66	0.29	97.89
165.0-166.0	467.53	12.84	4646.50	0.27	98.16
166.0-167.0	466.69	11.96	4658.46	0.25	98.41
167.0-168.0	466.34	11.07	4669.54	0.23	98.65
168.0-169.0	464.04	10.17	4679.71	0.21	98.86
169.0-170.0	460.28	9.24	4688.94	0.20	99.06
170.0-171.0	453.68	8.27	4697.21	0.17	99.23
171.0-172.0	450.11	7.32	4704.54	0.15	99.39
172.0-173.0	445.65	6.41	4710.95	0.14	99.52
173.0-174.0	465.87	5.66	4716.61	0.12	99.64
174.0-175.0	478.16	4.96	4721.57	0.10	99.75
175.0-176.0	503.56	4.22	4725.79	0.09	99.83
176.0-177.0	514.71	3.41	4729.20	0.07	99.91
177.0-178.0	513.73	2.46	4731.66	0.05	99.96
178.0-179.0	512.19	1.47	4733.13	0.03	99.99
179.0-180.0	513.11	0.49	4733.62	0.01	100.00

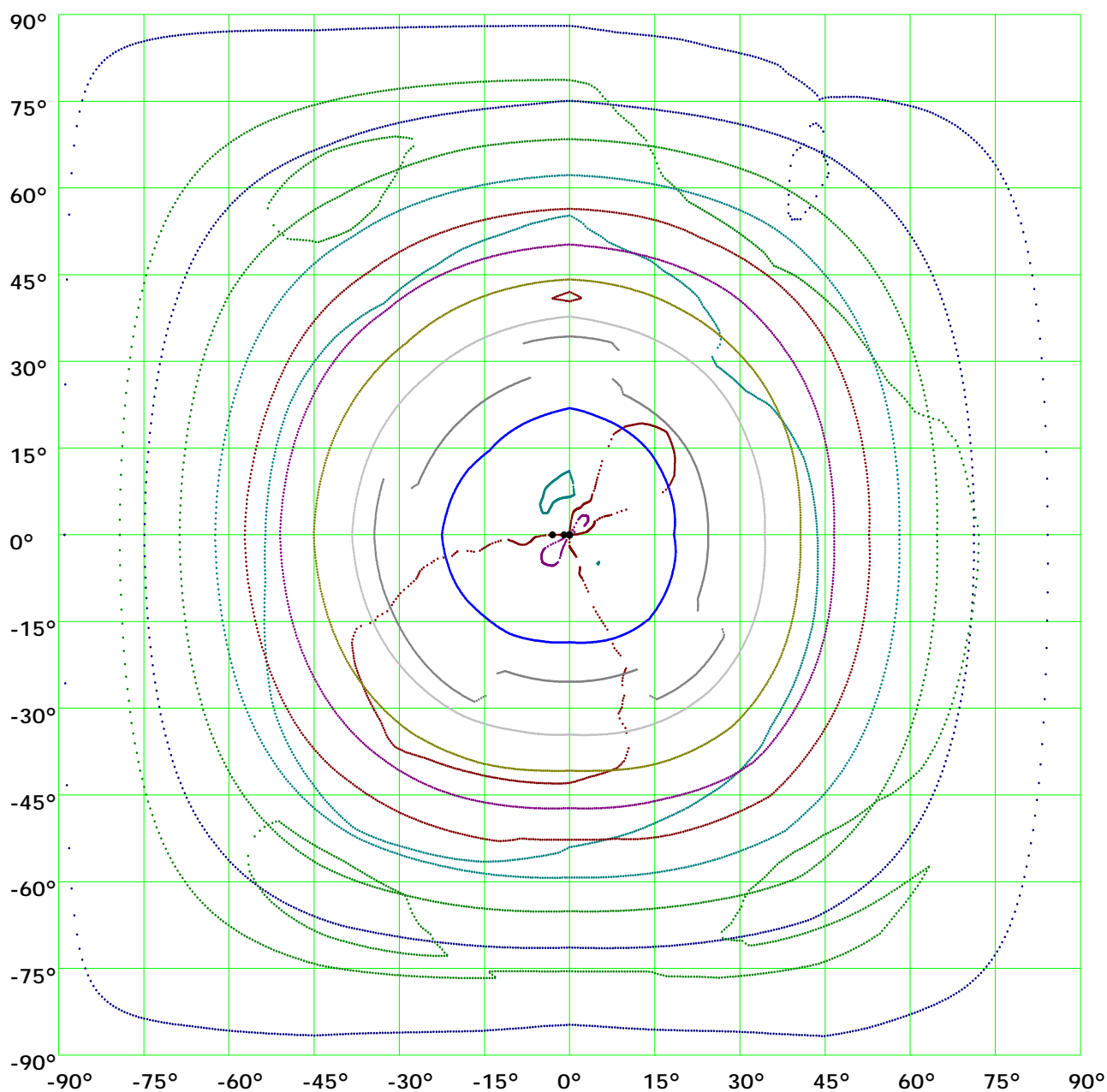
Iso-Candela [cd]



Coefficient Utilization Curve

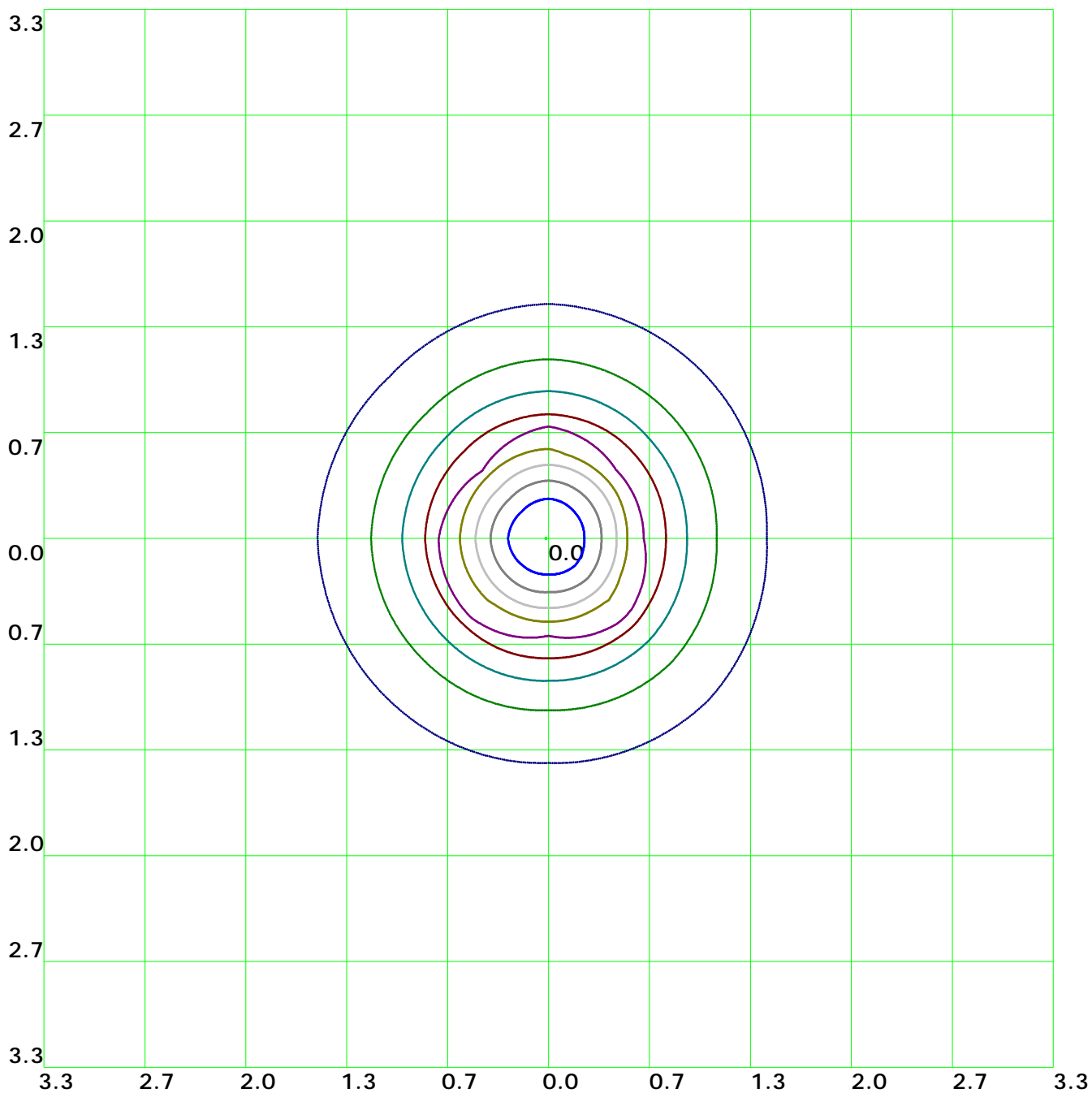


Isocandela(rectangle)



— (10%): 120.8cd	— (20%): 241.7cd	— (30%): 362.5cd	— (40%): 483.3cd
— (50%): 604.1cd	— (60%): 725.cd	— (70%): 845.8cd	— (80%): 966.6cd
— (90%): 1087.5cd	— (100%): 1208.3cd		

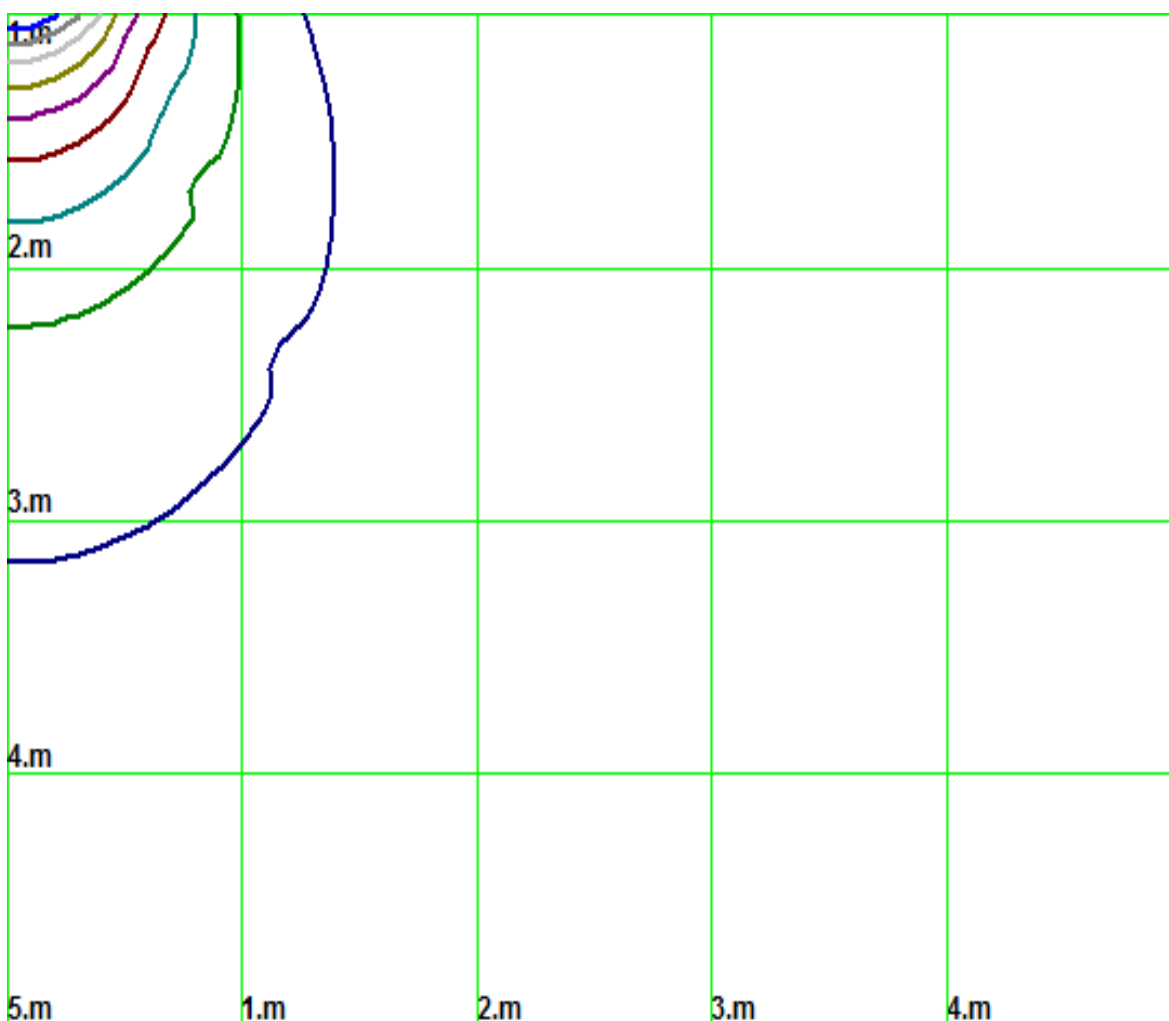
Isolx curve



Height: 1 m

- | | | | |
|-------------------|--------------------|------------------|------------------|
| — (10%): 120.8lx | — (20%): 241.7lx | — (30%): 362.5lx | — (40%): 483.3lx |
| — (50%): 604.1lx | — (60%): 725.1lx | — (70%): 845.8lx | — (80%): 966.6lx |
| — (90%): 1087.5lx | — (100%): 1207.1lx | | |

Space Isolx Curve



- (10%): 120.8lx — (20%): 241.7lx — (30%): 362.5lx — (40%): 483.3lx
- (50%): 604.1lx — (60%): 725.1lx — (70%): 845.8lx — (80%): 966.6lx
- (90%): 1087.5lx — (100%): 1207.1lx

Luminance Limiting Curve

Diameter: 0mm

Length: 0mm

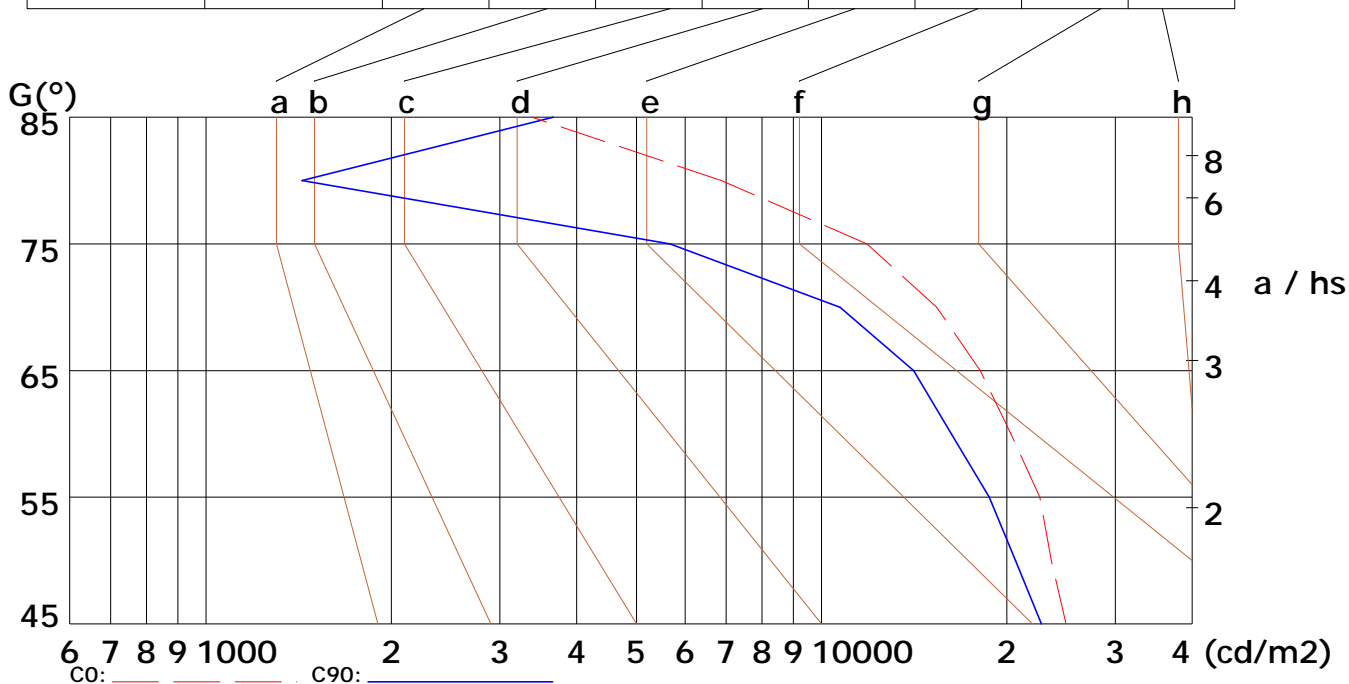
Width: 0mm

Height: 0mm

(cd/m²)

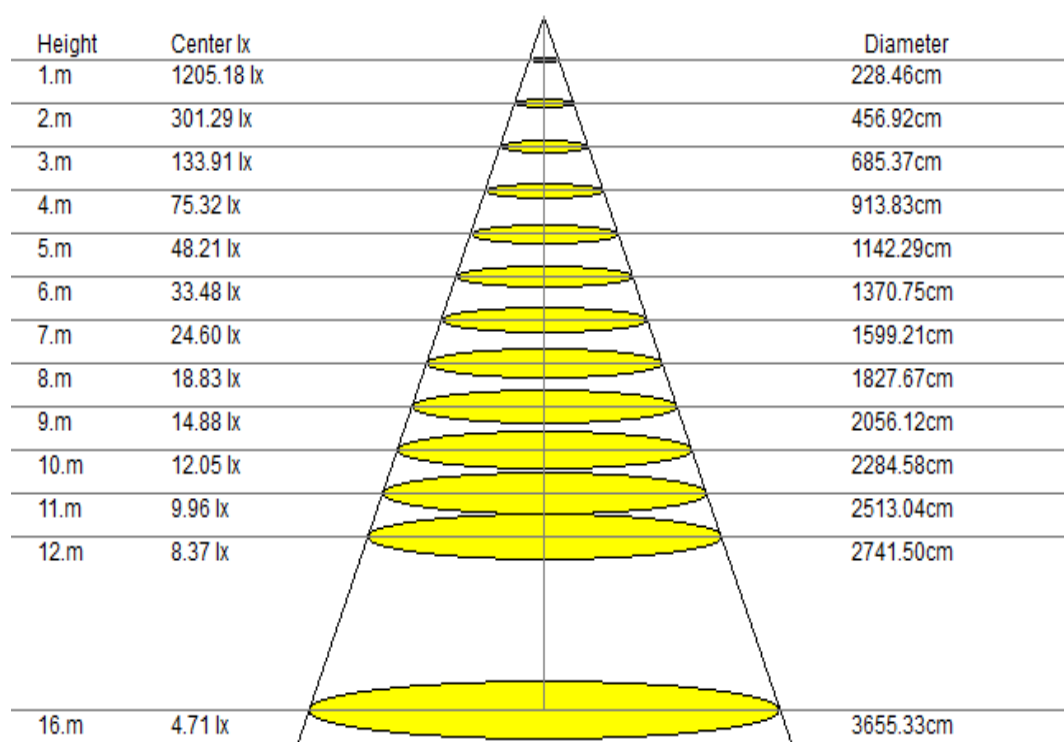
γ	45°	50°	55°	60°	65°	70°	75°	80°	85°
C0	24946	23614	22621	20321	18100	15392	11849	6871	3382
C90	22768	20654	18717	16259	14109	10716	5677	1432	3666

Glare	Quality	Service Values Illuminance (lx)									
1.15	A	2000	1000	500	≤300						
1.5	B		2000	1000	500	≤300					
1.85	C			2000	1000	500	≤300				
2.2	D				2000	1000	500	≤300			
2.55	E					2000	1000	500	≤300		



Lum. Limiting Curve (C0/C90)

Lux-Distance Curve

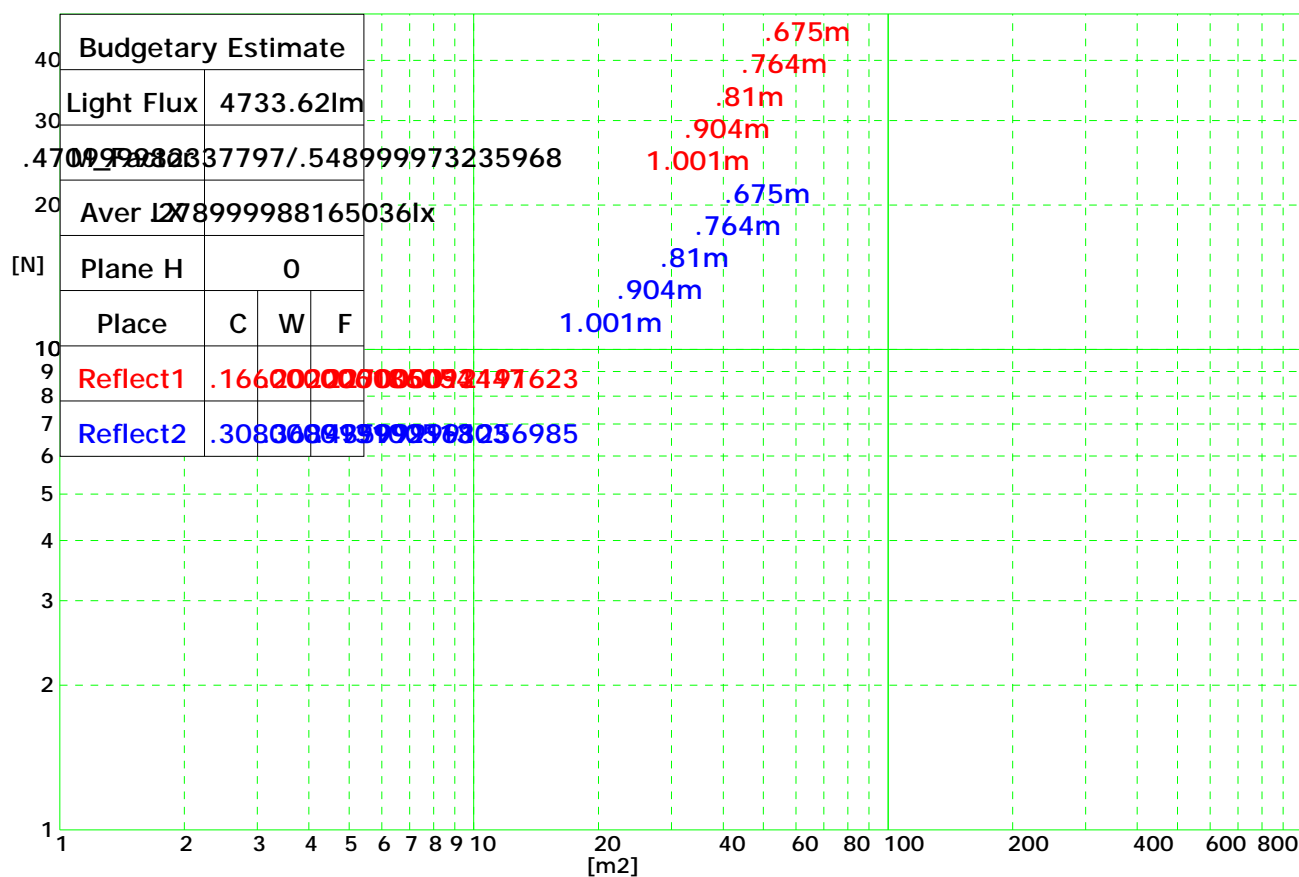


Beam Angle: 97.60°(50%Imax)

Coefficients of Utilization

RHOCC	80			70			50			30			10			0
RHOW	50	30	10	50	30	10	50	30	10	50	30	10	50	30	10	0
RCR	COEFFICIENTS OF UTILIZATION FOR RHOFC=20															
0	1.19	1.19	1.19	1.16	1.16	1.16	1.11	1.11	1.11	1.06	1.06	1.06	1.02	1.02	1.02	1.00
1	1.12	1.11	1.11	1.11	1.10	1.09	1.07	1.05	1.04	1.01	1.00	0.98	0.94	0.93	0.91	0.86
2	1.04	1.02	1.01	1.02	1.01	0.99	0.99	0.97	0.95	0.94	0.92	0.90	0.89	0.86	0.84	0.79
3	0.97	0.95	0.94	0.95	0.93	0.92	0.92	0.90	0.88	0.89	0.86	0.83	0.84	0.81	0.78	0.73
4	0.90	0.89	0.88	0.89	0.87	0.86	0.87	0.84	0.82	0.84	0.80	0.78	0.80	0.76	0.73	0.69
5	0.85	0.84	0.83	0.85	0.82	0.81	0.82	0.79	0.77	0.80	0.76	0.73	0.76	0.72	0.69	0.65
6	0.81	0.80	0.79	0.81	0.78	0.77	0.79	0.76	0.73	0.76	0.72	0.70	0.73	0.69	0.66	0.62
7	0.78	0.76	0.75	0.77	0.75	0.74	0.75	0.72	0.70	0.73	0.69	0.67	0.71	0.66	0.63	0.59
8	0.75	0.74	0.73	0.74	0.72	0.71	0.73	0.70	0.68	0.71	0.67	0.64	0.68	0.64	0.60	0.57
9	0.73	0.71	0.70	0.72	0.70	0.69	0.70	0.67	0.65	0.68	0.65	0.62	0.66	0.62	0.59	0.55
10	0.71	0.69	0.68	0.70	0.68	0.67	0.68	0.65	0.64	0.67	0.63	0.60	0.65	0.60	0.57	0.54

Indoor Budgetary Estimate Chart



UGR

Ceiling	70	70	50	50	30	70	70	50	50	30	
Wall	50	30	50	30	30	50	30	50	30	30	
Floor	20	20	20	20	20	20	20	20	20	20	
Room Size	Left to light axis direction of observation					Direction of light axis parallel observation					
X	Y										
2H	2H	14.8	16.0	14.9	15.9	16.4	14.7	16.0	14.8	15.9	16.4
	3H	16.3	17.5	16.7	17.7	18.0	16.2	17.3	16.6	17.7	17.9
	4H	17.0	18.0	17.4	18.7	18.7	16.8	18.0	17.3	18.7	18.8
	6H	17.6	18.5	18.0	18.8	19.1	17.3	18.4	17.8	18.9	19.0
	8H	17.9	18.9	18.1	19.0	19.3	17.7	18.8	17.9	18.9	19.3
4H	12H	17.9	18.8	18.2	19.3	19.5	17.8	18.7	18.0	19.3	19.6
	2H	15.8	16.7	15.8	16.8	17.1	15.6	16.5	15.7	16.7	17.0
	3H	17.5	18.3	17.6	18.5	18.8	17.2	18.2	17.7	18.4	18.8
	4H	18.2	19.0	18.6	19.1	19.5	18.0	18.8	18.3	19.1	19.5
	6H	18.8	19.6	19.2	19.8	20.1	18.7	19.4	19.0	19.8	20.1
8H	8H	19.1	19.6	19.4	20.0	20.3	18.9	19.5	19.2	19.9	20.3
	12H	19.3	20.0	19.5	20.1	20.5	19.2	19.8	19.6	20.1	20.4
	4H	18.5	19.2	19.0	19.4	19.8	18.4	18.9	18.8	19.4	19.9
	6H	19.4	19.9	19.9	20.3	20.7	19.3	19.7	19.6	20.2	20.5
	8H	19.6	20.2	20.2	20.6	21.0	19.6	20.0	20.1	20.5	20.8
12H	12H	20.0	20.5	20.5	20.8	21.2	19.8	20.2	20.3	20.8	21.2
	4H	18.7	19.2	19.1	19.6	19.9	18.5	19.0	18.8	19.4	19.9
	6H	19.6	19.9	19.9	20.3	20.7	19.3	19.8	19.8	20.2	20.7
	8H	19.9	20.3	20.3	20.6	21.1	19.8	20.2	20.1	20.5	21.0