

# Report of Test

## LLIA000901-022

Catalog Number: PT1815L2/F11/D61/L411

Pendant mounted, formed steel canopy, formed white enamel steel frame, white interior "lumenate" diffuser with translucent white acrylic enclosure, exterior opaque "lumenate" shade, no enclosure.

One white LED module with clear patterned hemispherical lens below.

One ERP ESS030W-0620-42 LED driver

120.0Vac, 60.00Hz, 0.2079A, 24.40W, 0.978PF, 12.7%THD(i)



### Performance Summary

Total Light Output	1127 lm
Luminaire Power	24.4 W
Luminous Efficacy	46.2 lm/W

**PREPARED FOR : Lumetta, Inc, 33 Minnesota Avenue, Warwick, RI 02888, USA**



**Test Report No. LLIA000901-022**

Catalog Number: PT1815L2/F11/D61/L411

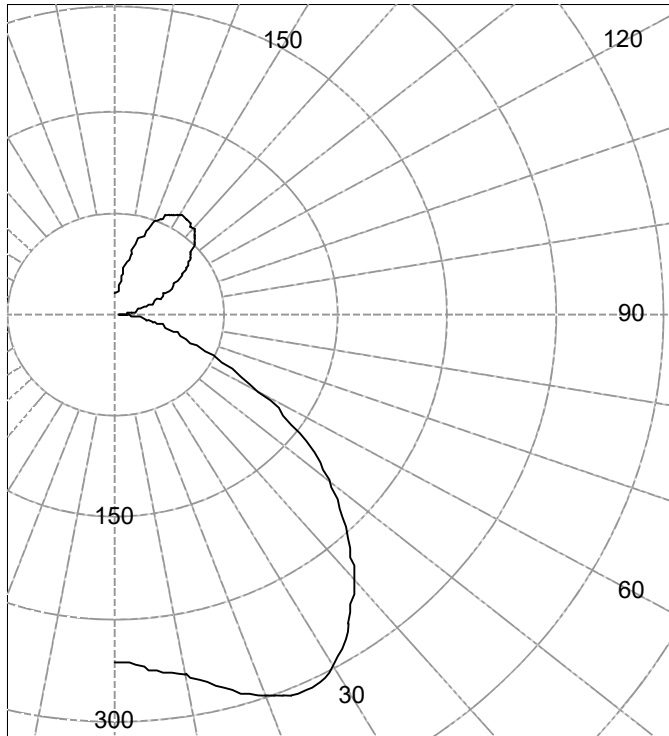
Pendant mounted, formed steel canopy, formed white enamel steel frame, white interior "lumenate" diffuser with translucent white acrylic enclosure, exterior opaque "lumenate" shade, no enclosure.

One white LED module with clear patterned hemispherical lens below.

One ERP ESS030W-0620-42 LED driver

120.0Vac, 60.00Hz, 0.2079A, 24.40W, 0.978PF, 12.7%THD(i)

Legend: All planes - Black (cd)



(Rotational symmetry)

**AVERAGE LUMINANCE (cd / m<sup>2</sup>)**

Gamma	C0
45.0	929
55.0	648
65.0	324
75.0	154
85.0	51

**INTENSITY SUMMARY (cd)**

Gamma	All Planes	Flux (lm)	Gamma	C0	Flux (lm)
0	256		90	1	
5	262	25	95	5	5
10	271		100	10	
15	285	81	105	19	20
20	300		110	28	
25	307	141	115	38	38
30	298		120	48	
35	277	173	125	58	52
40	252		130	67	
45	222	171	135	75	58
50	189		140	82	
55	153	136	145	85	53
60	113		150	85	
65	74	75	155	80	37
70	47		160	70	
75	32	35	165	53	16
80	20		170	35	
85	10	10	175	22	2
90	1		180	15	

**ZONAL FLUX AND PERCENTAGES**

Zone	Flux (lm)	%Lamp	%Luminaire
0-30	247	N / A	21.9
0-40	420	N / A	37.3
0-60	728	N / A	64.6
0-90	847	N / A	75.2
40-90	427	N / A	37.9
60-90	120	N / A	10.6
90-180	280	N / A	24.8
0-180	1127	N / A	100.0

Total Light Output = 1,127 lm

Spacing Criterion: 0-180 1.6  
Spacing Criterion: 90-270 1.6

Signed:

Authorized Signatory

Date of test 8-Jan-2018  
Date of report 12-Jan-2018



**Test Report No. LLIA000901-022**

Catalog Number: PT1815L2/F11/D61/L411

Pendant mounted, formed steel canopy, formed white enamel steel frame, white interior "lumenate" diffuser with translucent white acrylic enclosure, exterior opaque "lumenate" shade, no enclosure.

One white LED module with clear patterned hemispherical lens below.

One ERP ESS030W-0620-42 LED driver

120.0Vac, 60.00Hz, 0.2079A, 24.40W, 0.978PF, 12.7%THD(i)

**Intensity (cd) and Flux (lm) data**

Gamma	Intensity	Flux	Gamma	Intensity	Flux
0.0	256		90.0	1	
2.5	258		92.5	2	
5.0	262	25	95.0	5	5
7.5	267		97.5	7	
10.0	271		100.0	10	
12.5	277		102.5	14	
15.0	285	81	105.0	19	20
17.5	293		107.5	23	
20.0	300		110.0	28	
22.5	305		112.5	33	
25.0	307	141	115.0	38	38
27.5	304		117.5	43	
30.0	298		120.0	48	
32.5	288		122.5	53	
35.0	277	173	125.0	58	52
37.5	265		127.5	63	
40.0	252		130.0	67	
42.5	238		132.5	71	
45.0	222	171	135.0	75	58
47.5	206		137.5	78	
50.0	189		140.0	82	
52.5	172		142.5	84	
55.0	153	136	145.0	85	53
57.5	134		147.5	85	
60.0	113		150.0	85	
62.5	93		152.5	83	
65.0	74	75	155.0	80	37
67.5	58		157.5	76	
70.0	47		160.0	70	
72.5	39		162.5	63	
75.0	32	35	165.0	53	16
77.5	26		167.5	44	
80.0	20		170.0	35	
82.5	15		172.5	28	
85.0	10	10	175.0	22	2
87.5	4		177.5	17	
90.0	1		180.0	15	



**Test Number: LLIA000901-022**

Catalog Number: PT1815L2/F11/D61/L411

Pendant mounted, formed steel canopy, formed white enamel steel frame, white interior "lumenate" diffuser with translucent white acrylic enclosure, exterior opaque "lumenate" shade, no enclosure.

One white LED module with clear patterned hemispherical lens below.

One ERP ESS030W-0620-42 LED driver

120.0Vac, 60.00Hz, 0.2079A, 24.40W, 0.978PF, 12.7%THD(i)

**Coefficients Of Utilization - Zonal Cavity Method**

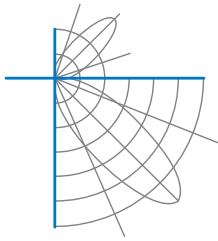
Effective Floor Cavity Reflectance 0.20

RC	80				70				50			30			10			0
	70	50	30	10	70	50	30	10	50	30	10	50	30	10	50	30	10	0
0	113	113	113	113	108	108	108	108	97	97	97	88	88	88	79	79	79	75
1	104	100	96	92	99	95	92	89	86	84	81	78	76	75	71	70	68	65
2	95	88	82	76	90	84	78	74	76	72	68	69	66	63	63	60	58	55
3	87	77	70	64	83	74	67	62	68	62	58	62	57	54	56	53	50	47
4	80	69	61	55	76	66	58	53	60	54	49	55	50	46	50	46	43	40
5	73	61	53	47	70	59	51	46	54	48	43	50	44	40	45	41	38	35
6	68	55	47	41	64	53	45	40	49	42	37	45	39	35	41	37	33	31
7	63	50	42	36	59	48	40	35	44	38	33	41	35	31	37	33	29	27
8	58	45	37	32	55	44	36	31	40	34	29	37	32	28	34	30	26	24
9	54	41	34	28	51	40	33	28	37	31	26	34	29	25	32	27	24	22
10	51	38	31	26	48	37	30	25	34	28	24	32	26	23	29	25	21	19

For absolute test reports, CUs are expressed as a percentage of total lumen output. Calculations were based on published IES procedures, and are based on the zonal cavity method. Basic assumptions: 1) Room surfaces are lambertian reflectors. 2) Incident flux on each surface is uniformly distributed. 3) The room is spectrally neutral. When luminaires are not evenly distributed throughout the room, or do not exhibit lateral symmetry, CU values may differ from actual performance.

**Circle of Light Plot**

Height(ft)	Illuminance at Nadir (fc)	Beam Width (across 50% Nadir Illum)	
		0-180	90-270
6.0	7.1	9.41	9.41
8.0	4.0	12.54	12.54
10.0	2.6	15.68	15.68
12.0	1.8	18.82	18.82
14.0	1.3	21.95	21.95
16.0	1.0	25.09	25.09



**Test Report No. LLIA000901-022**

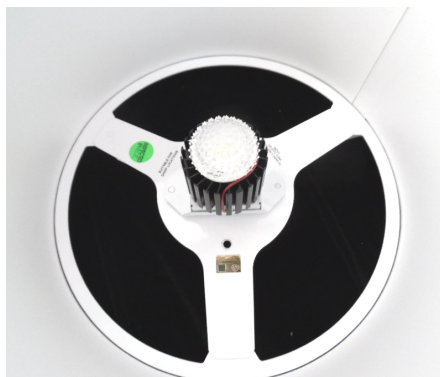
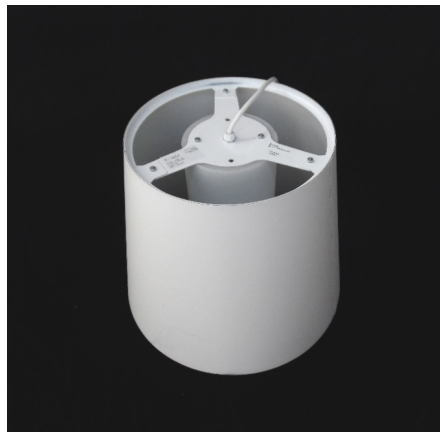
Catalog Number: PT1815L2/F11/D61/L411

Pendant mounted, formed steel canopy, formed white enamel steel frame, white interior "lumenate" diffuser with translucent white acrylic enclosure, exterior opaque "lumenate" shade, no enclosure.

One white LED module with clear patterned hemispherical lens below.

One ERP ESS030W-0620-42 LED driver

120.0Vac, 60.00Hz, 0.2079A, 24.40W, 0.978PF, 12.7%THD(i)





**Test Report No. LLIA000901-022**

Catalog Number: PT1815L2/F11/D61/L411

Pendant mounted, formed steel canopy, formed white enamel steel frame, white interior "lumenate" diffuser with translucent white acrylic enclosure, exterior opaque "lumenate" shade, no enclosure.

One white LED module with clear patterned hemispherical lens below.

One ERP ESS030W-0620-42 LED driver

120.0Vac, 60.00Hz, 0.2079A, 24.40W, 0.978PF, 12.7%THD(i)

**Test Distance** 9.5 m  
**Test Temperature** 24.9 °C

**Notes**

The laboratory has not participated in the selection of samples to be tested. All testing is performed on the understanding that the significance of the report is limited to the extent that the test sample is representative of production units.

Tested in accordance with the applicable sections of publications: IES LM-79-08 (Sec. 12), IES LM-16-93, IES LM-58-13, CIE 13.3:1995, CIE 15:2004, ANSI C78.377:2015, ANSI C82.77-10:2014.

The luminous intensity values, and other derived quantities, contained in this report are based on the absolute data, as measured.

Prorating the performance of the sample for the use of other component combinations (such as lamp / LED / Ballast / driver), or for use in different environmental conditions than that tested, may produce erroneous results.

This report is free of erasures and corrections.

Photometric intensity values are reported using the CIE Gamma coordinate system as defined in CIE publication number 121.

This report may contain data that are not covered by the NVLAP accreditation. Quantities marked with \* are not covered.

This report must not be used by the customer to claim product certification, approval or endorsement by NVLAP, NIST, or any agency of the Federal Government.